



- 1** TARGET, 90° THEODOLITE  
T90
- 2** TARGET, 90° MAGNETIC THEODOLITE  
T90M
- 3** TARGET, CORNER 90° (LEFT or RIGHT HAND)  
TC/90 LH or RH
- 4** TARGET, CORNER 90° (NEG or POS)  
TC/90 NEG or POS
- 5** TARGET, STRAIGHT-ON THEODOLITE  
TSO
- 6** TARGET, MAGNETIC THEODOLITE  
TM
- 7** TARGET, 45° THEODOLITE  
T45
- 8** TARGET, 45° MAGNETIC THEODOLITE  
T45M
- 9** TARGET, CORNER 45° (LEFT or RIGHT HAND)  
TC45 LH or RH
- 10** TARGET, CORNER 45° (NEG or POS)  
TC45 NEG or POS
- 11** TARGET, BUTTON  
TB  
  
TARGET BUTTON VARIABLE  
TBV
- 12** FLUSH MOUNT THEODOLITE  
FM
- 13** DOUBLE VECTOR TARGET THEODOLITE  
DVT  
  
TARGET, CORNER THEODOLITE  
TC
- 14** 45° DOUBLE VECTOR TARGET THEODOLITE  
45 DVT
- 15** DOUBLE VECTOR TARGET MAGNETIC  
DVTM
- 16** TARGET SKIN GAP  
TSG
- 17** THEODOLITE 1.5 SPHERE  
T 1.5 S

**T90**

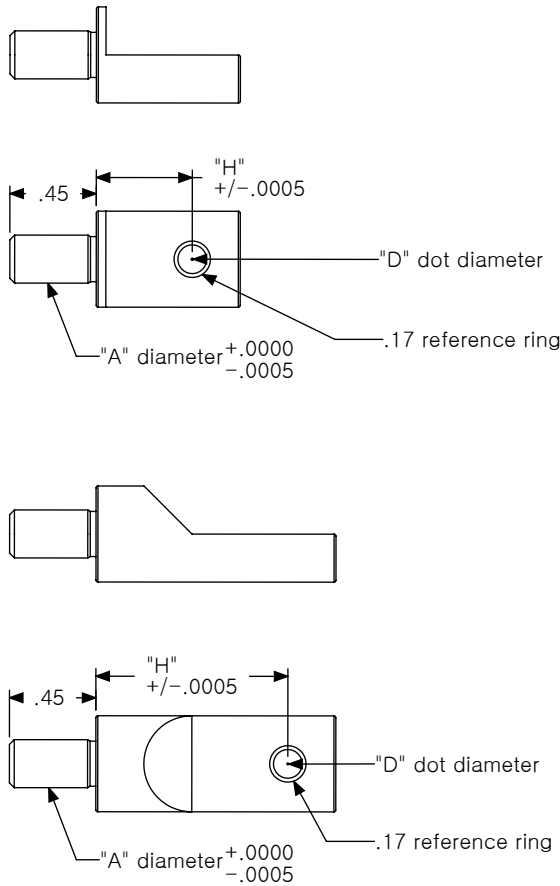
Used with computer-aided Theodolite for targeting holes approximately 90° to line of sight.

**T90 ORDERING INFORMATION**

	FAMILY	"H" TO CENTERLINE	"A" SHANK DIAMETER	"D" DOT DIAMETER	MATERIAL		
T90 STANDARD BUILD	T90	↓	↓	↓	1144 steel, black oxide finish		
CUSTOMER PROVIDES INFO	T90	■	■	■			
REFERENCE NOTES							

**TARGET, 90° THEODOLITE**

CAD on file



T90 - .500



T90 - 1.000



**T90 FEATURES**  
1144 STEEL, BLACK OXIDE FINISH (standard)

## T90M

Used to target above and 90° to steel surfaces. The side of the body may be used to target surfaces, edges, or steps .2500 away.

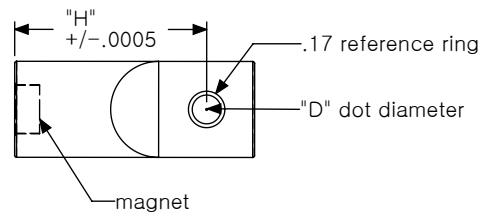
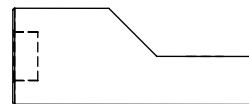
## T90M ORDERING INFORMATION

	FAMILY	"H" TO CENTERLINE	"D" DOT DIAMETER	MATERIAL			
T90M STANDARD BUILD	T90M	↓	↓	1144 steel, black oxide finish			
CUSTOMER PROVIDES INFO	T90M	■	■				
REFERENCE NOTES							

A  
2

## TARGET, 90° MAGNETIC THEODOLITE

CAD on file



**T90M FEATURES**  
1144 STEEL, BLACK OXIDE FINISH (standard)


**T90M ORDERING**  
Normal offsets for targets are:

.3125  
.500  
1.000  
12mm  
24mm

Other special offsets available, subject to quote.

**TC / 90**  
(LH or RH)  
Used with computer-aided Theodolite for targeting edges and/or surfaces.

**TC / 90 - LH or RH ORDERING INFORMATION**

	FAMILY	LEFT or RIGHT HAND	"D" DOT DIAMETER	MATERIAL			
TC / 90 -LH or RH STANDARD BUILD	TC / 90	LH or RH		1144 steel, black oxide finish			
CUSTOMER PROVIDES INFO	TC / 90	▪	▪				
REFERENCE NOTES	_____						
	_____						

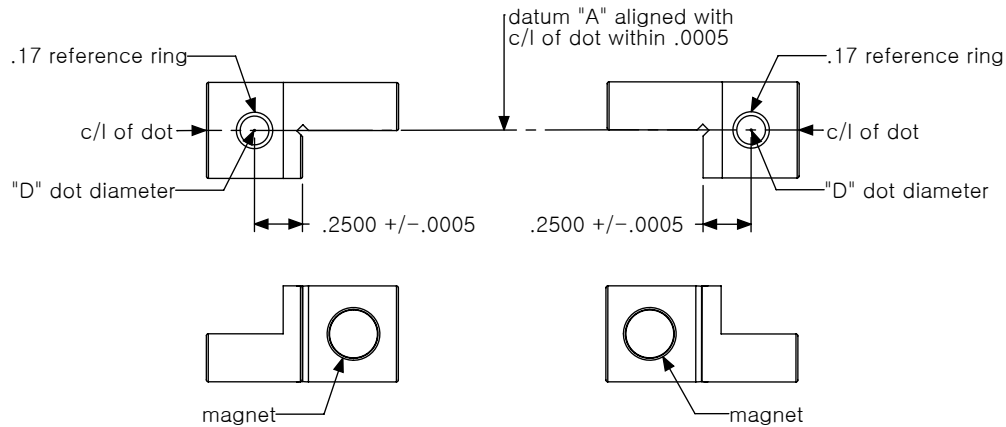
**TARGET CORNER, 90° (LEFT HAND or RIGHT HAND)**

CAD on file

TC / 90-LH



TC / 90-RH



**TC / 90**  
LH or RH  
**FEATURES**  
1144 STEEL, BLACK OXIDE  
FINISH (standard)

**TC / 90**  
(NEG or POS)  
Used with computer-aided Theodolite for targeting edges and/or surfaces.

**TC / 90 - NEG or POS ORDERING INFORMATION**

	FAMILY	NEGATIVE or POSITIVE	"D" DOT DIAMETER	MATERIAL			
TC / 90-NEG or POS STANDARD BUILD	TC / 90	NEG or POS	↓	1144 steel, black oxide finish			
CUSTOMER PROVIDES INFO	TC / 90	▪	▪				
REFERENCE NOTES							

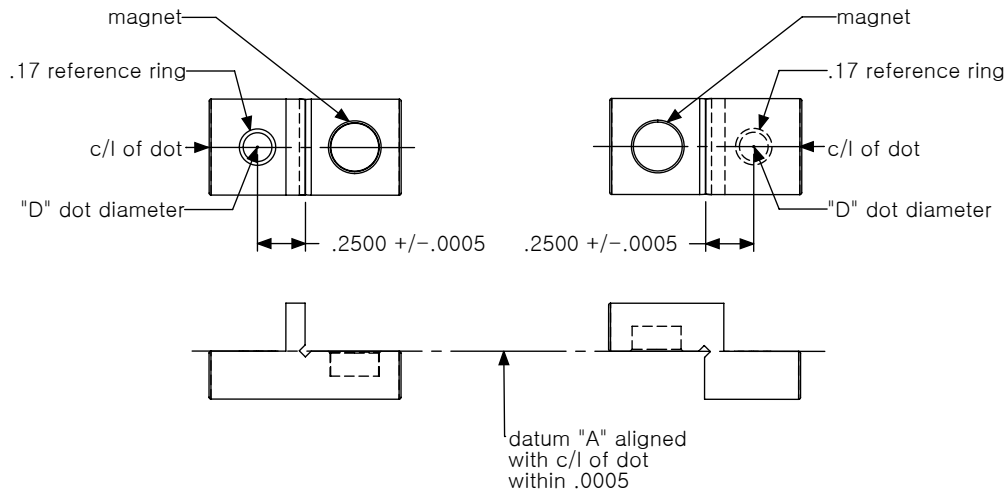
**TARGET CORNER, 90° (NEGATIVE or POSITIVE)**

CAD on file

**NEGATIVE**



**POSITIVE**



**TC / 90**  
**NEG or POS**  
**FEATURES**  
1144 STEEL, BLACK OXIDE  
FINISH (standard)

**TSO**

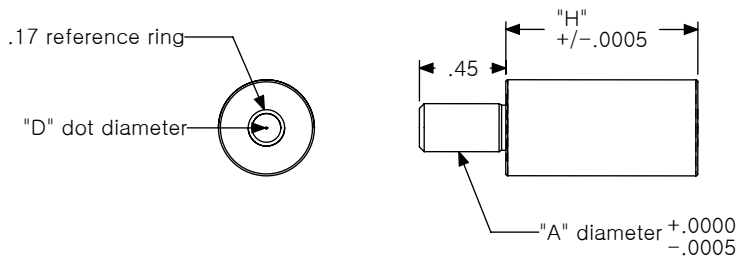
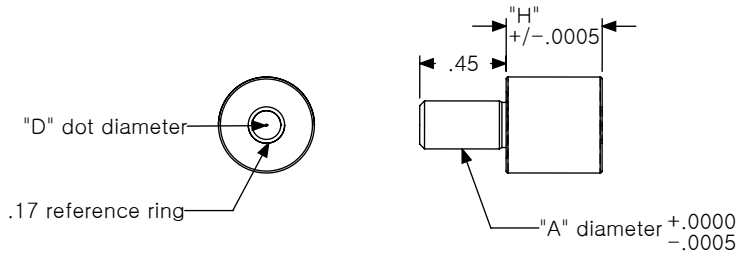
Used with computer-aided Theodolite for targeting holes approximately in line with line of sight.

**TSO ORDERING INFORMATION**

	FAMILY	"H" TO CENTERLINE	"A" SHANK DIAMETER	"D" DOT DIAMETER	MATERIAL		
TSO STANDARD BUILD	TSO	↓	↓	↓	1144 steel, black oxide finish		
CUSTOMER PROVIDES INFO	TSO	■	■	■			
REFERENCE NOTES	_____						

**TARGET, STRAIGHT-ON THEODOLITE**

CAD on file



**TSO FEATURES**

1144 STEEL, BLACK OXIDE FINISH (standard)

**TSO ORDERING**

Normal offsets for targets are:

- .3125
- .500
- 1.000
- 12mm
- 24mm

Other special offsets available, subject to quote.

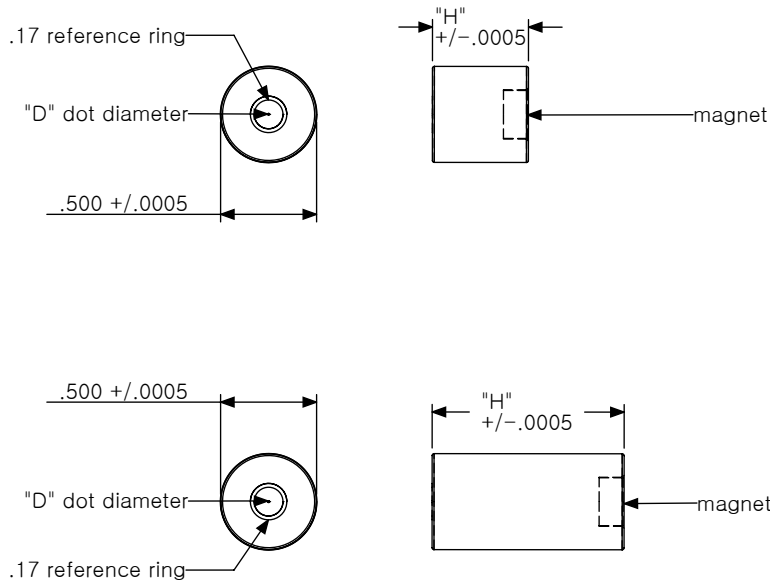
**TM**  
 Used to target above and 90° to steel surfaces.  
 The side of the body may be used to target surfaces, edges, or steps .2500 away.

TM ORDERING INFORMATION

	FAMILY	"H" TO CENTERLINE	"D" DOT DIAMETER	MATERIAL			
TM STANDARD BUILD	TM	↓	↓	1144 steel, black oxide finish			
CUSTOMER PROVIDES INFO	TM	■	■				
REFERENCE NOTES	_____						

TARGET, MAGNETIC THEODOLITE

CAD on file



**TM FEATURES**  
 1144 STEEL, BLACK OXIDE FINISH (standard)

**TM ORDERING**  
 Normal offsets for targets are:

- .3125
- .500
- 1.000
- 12mm
- 24mm

Other special offsets available, subject to quote.

**T45**

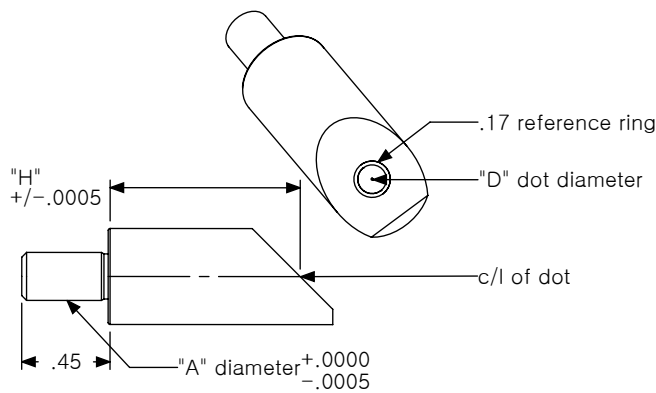
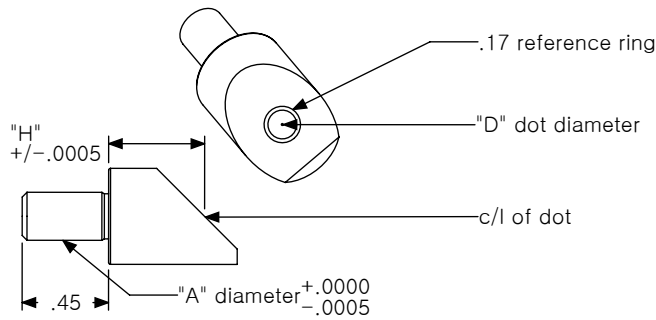
Used with computer-aided Theodolite for targeting holes approximately 45° to the line of sight.

**T45 ORDERING INFORMATION**

	FAMILY	"H" TO CENTERLINE	"A" SHANK DIAMETER	"D" DOT DIAMETER	MATERIAL		
T45 STANDARD BUILD	T45	↓	↓	↓	1144 steel, black oxide finish		
CUSTOMER PROVIDES INFO	T45	▪	▪	▪			
REFERENCE NOTES	_____						

**TARGET, 45° THEODOLITE**

CAD on file



**T45 FEATURES**  
1144 STEEL, BLACK OXIDE FINISH (standard)



## T45M

Used to target above and 90° to steel surfaces when a 45° target face is more applicable. The side of the body may be used to target surfaces, edges, or steps .2500 away.

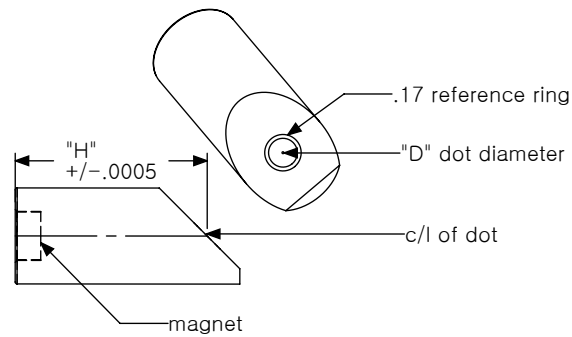
## T45M ORDERING INFORMATION

	FAMILY	"H" TO CENTERLINE	"D" DOT DIAMETER	MATERIAL			
T45M STANDARD BUILD	T45M	↓	↓	1144 steel, black oxide finish			
CUSTOMER PROVIDES INFO	T45M	■	■				
REFERENCE NOTES							

A  
8

## TARGET, 45° MAGNETIC THEODOLITE

CAD on file



**T45M FEATURES**  
1144 STEEL, BLACK OXIDE FINISH (standard)

**TC / 45**  
(LH or RH)

Used with computer-aided Theodolite for targeting edges and/or surfaces.

**TC / 45 - LH or RH ORDERING INFORMATION**

	FAMILY	LEFT or RIGHT HAND	"D" DOT DIAMETER	MATERIAL			
TC / 45 -LH or RH STANDARD BUILD	TC / 45	LH or RH		1144 steel, black oxide finish			
CUSTOMER PROVIDES INFO	TC / 45	▪	▪				
REFERENCE NOTES	_____						
	_____						

**TARGET CORNER, 45° THEODOLITE (LEFT HAND or RIGHT HAND)**

CAD on file

TC / 45-LH

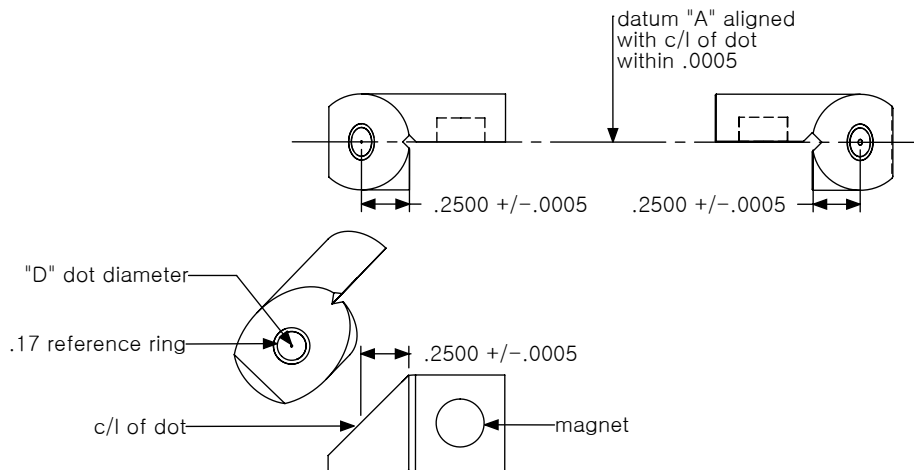


TC / 45-RH



**TC / 45 - LH or RH FEATURES**

1144 STEEL, BLACK OXIDE FINISH (standard)



**TC / 45**  
 (NEG or POS)  
 Used with computer-aided Theodolite for targeting edges and/or surfaces.

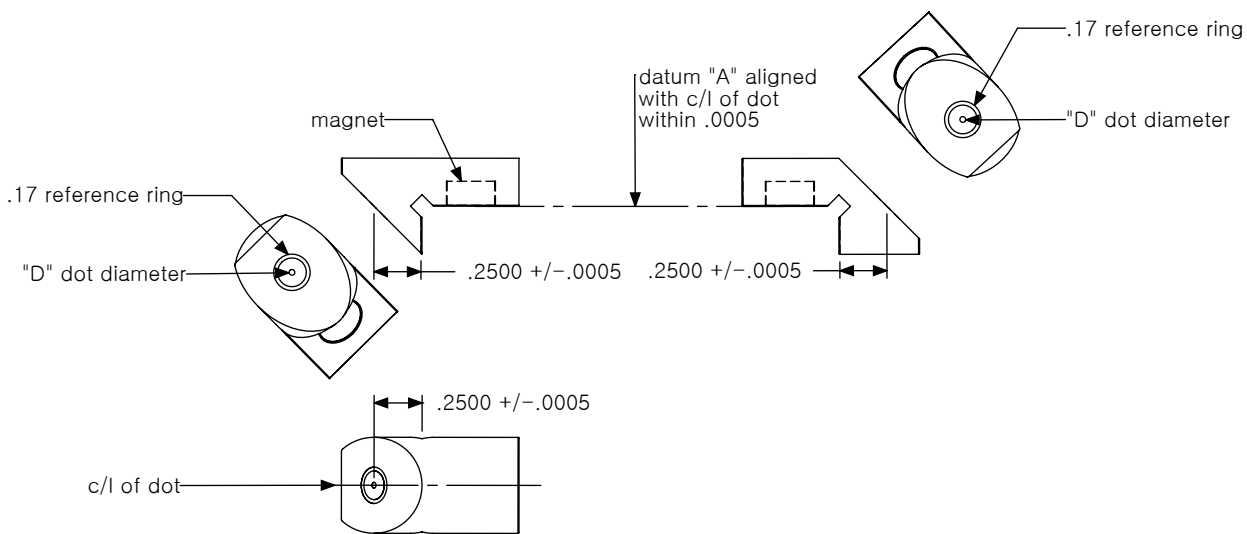
TC / 45 - NEG or POS ORDERING INFORMATION

	FAMILY	NEGATIVE or POSITIVE	"D" DOT DIAMETER	MATERIAL			
TC / 45-NEG or POS STANDARD BUILD	TC / 45	NEG or POS	↓	1144 steel, black oxide finish			
CUSTOMER PROVIDES INFO	TC / 45	■	■				
REFERENCE NOTES							

A  
10

**TARGET CORNER, 45° THEODOLITE (NEGATIVE or POSITIVE)**

CAD on file



**TC / 45**  
**NEG or POS**  
**FEATURES**  
 1144 STEEL, BLACK OXIDE  
 FINISH (standard)

### TB and TBV

Used with computer-aided theodolite for targeting .125 diameter tooling holes. For any other requirements, refer to TBV design.

### TB ORDERING INFORMATION

	FAMILY	"D" DOT DIAMETER	MATERIAL				
TB STANDARD BUILD	TB	↓	1144 steel, black oxide finish				
CUSTOMER PROVIDES INFO	TB	■					

### TBV ORDERING INFORMATION

	FAMILY	"A" SHANK DIAMETER	"B" SHANK LENGTH	"D" DOT DIAMETER	MATERIAL		
TBV STANDARD BUILD	TBV	↓	↓	↓	1144 steel, black oxide finish		
CUSTOMER PROVIDES INFO	TBV	■	■	■			

REFERENCE NOTES

---



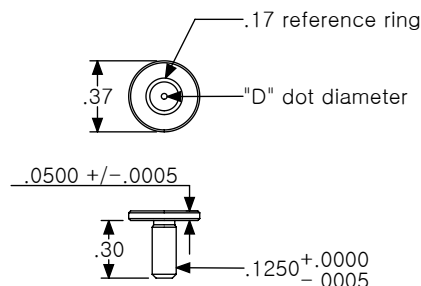
---



---

## TARGET, BUTTON THEODOLITE

CAD on file



### TB FEATURES

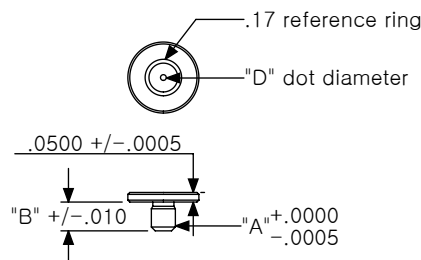
1144 STEEL, BLACK OXIDE FINISH (standard)

### TB ORDERING

Can only select dot diameter.

## TARGET, BUTTON VARIABLE THEODOLITE

CAD on file



### TBV FEATURES

1144 STEEL, BLACK OXIDE FINISH (standard)

### TBV ORDERING

Customer has more call-out options than TB.

**FM**  
 Used for targeting holes when a zero height value is required. See FM notes for ordering specifications on this product.

FM ORDERING INFORMATION

	FAMILY	"A" SHANK DIAMETER	"D" DOT DIAMETER	MATERIAL			
FM STANDARD BUILD	FM	↓	↓	1144 steel, black oxide finish			
CUSTOMER PROVIDES INFO	FM	■	■				
REFERENCE NOTES	_____						
	_____						

FLUSH MOUNT THEODOLITE

CAD on file

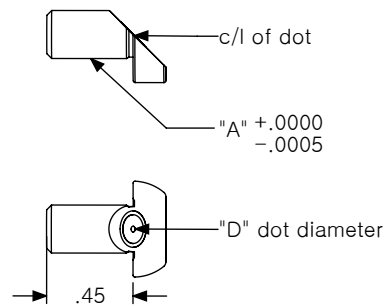


**FM FEATURES**  
 1144 STEEL, BLACK OXIDE FINISH (standard)

**FM ORDERING**  
 STANDARD SHANK SIZES:

- .1250
- .1875
- .2500
- .3125
- .3750
- .4375
- .5000
- .6250
- .7500
- 1.000
- 6mm
- 8mm

Other shank sizes possible, but subject to call-out quote.



**DVT**

Used to measure location and angularity of a hole.

**DVT ORDERING INFORMATION**

	FAMILY	"A" SHANK DIAMETER	"D" DOT DIAMETER	MATERIAL			
DVT STANDARD BUILD	DVT	↓	↓	1144 steel, black oxide finish			
CUSTOMER PROVIDES INFO	DVT	■	■				

**TC**

Used with computer-aided Theodolite for targeting straight edges.

**TC ORDERING INFORMATION**

	FAMILY	"D" DOT DIAMETER	MATERIAL				
TC STANDARD BUILD	TC	↓	1144 steel, black oxide finish				
CUSTOMER PROVIDES INFO	TC	■					

REFERENCE NOTES

---



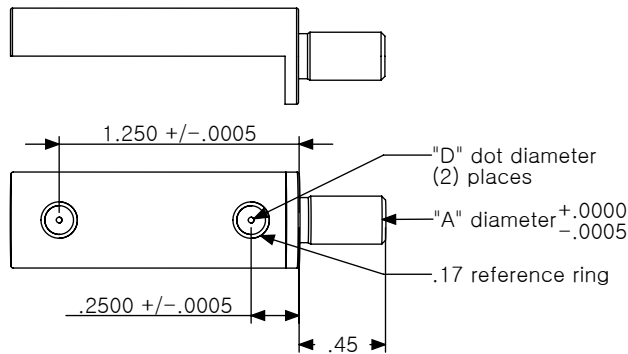
---



---

**DOUBLE VECTOR, TARGET THEODOLITE**

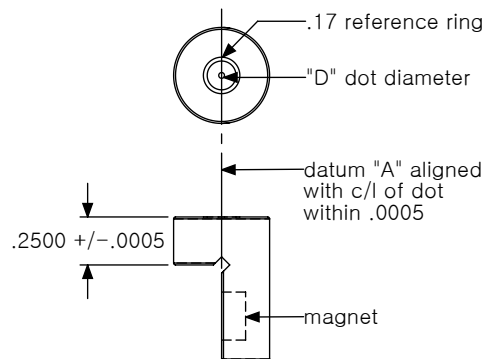
CAD on file



**DVT FEATURES**  
1144 STEEL, BLACK OXIDE FINISH (standard)

**TARGET, CORNER THEODOLITE**

CAD on file



**TC FEATURES**  
1144 STEEL, BLACK OXIDE FINISH (standard)

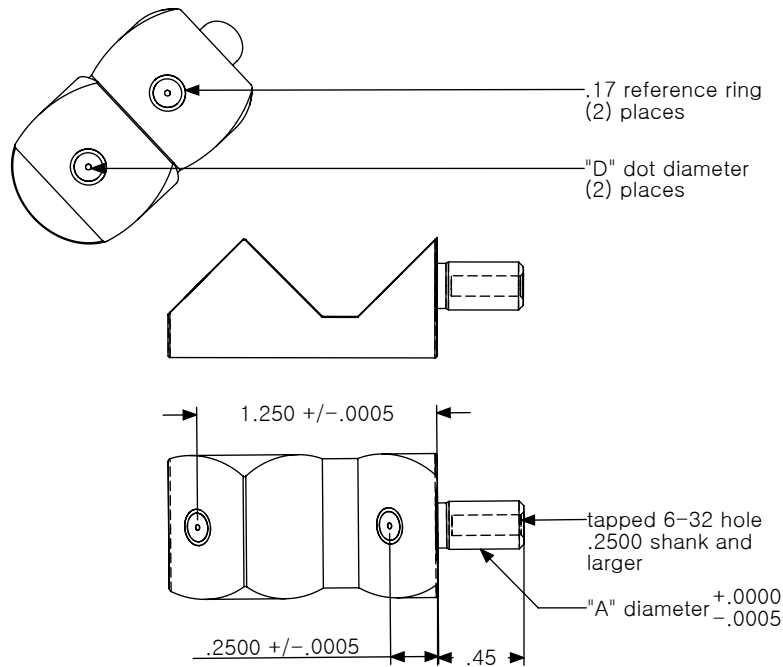
**45 DVT**  
Used to measure  
location and angularity  
of a hole.

45 DVT ORDERING INFORMATION

	FAMILY	"A" SHANK DIAMETER	"D" DOT DIAMETER	MATERIAL			
45 DVT STANDARD BUILD	45 DVT	↓	↓	1144 steel, black oxide finish			
CUSTOMER PROVIDES INFO	45 DVT	■	■				
REFERENCE NOTES	_____						
	_____						

45° DOUBLE VECTOR TARGET THEODOLITE

CAD on file



**45 DVT FEATURES**  
1144 STEEL, BLACK OXIDE FINISH (standard)

**DVTM**

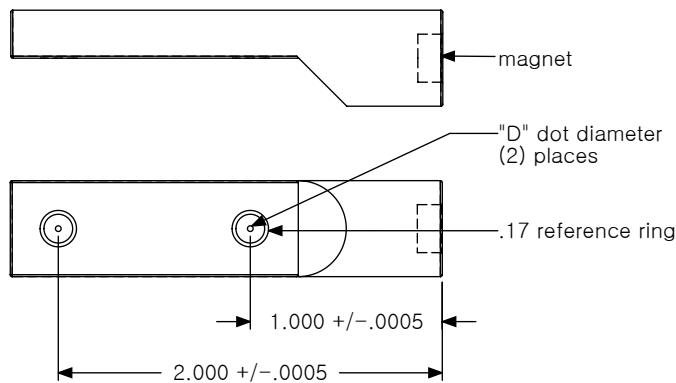
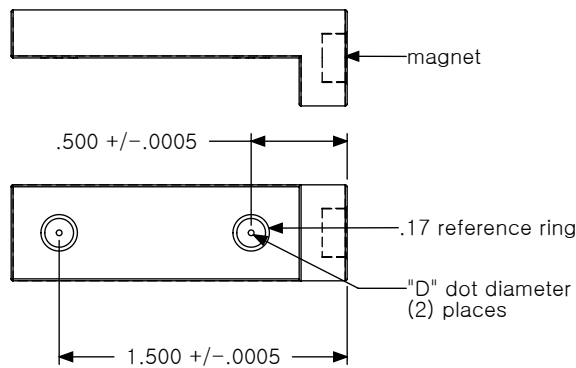
Used to measure location and angularity of a surface.

**DVTM ORDERING INFORMATION**

	FAMILY	"H" TO FIRST DOT	"D" DOT DIAMETER	MATERIAL			
DVTM STANDARD BUILD	DVTM	↓	↓	1144 steel, black oxide finish			
CUSTOMER PROVIDES INFO	DVTM	■	■				
REFERENCE NOTES	_____						
	_____						

**DOUBLE VECTOR, TARGET MAGNET**

CAD on file



DVTM - .500



DVTM - 1.000



**DVTM FEATURES**  
1144 STEEL, BLACK OXIDE FINISH (standard)



**TSG**  
Used for locating edges  
of sheet metal, slots,  
or grooves.

TSG ORDERING INFORMATION

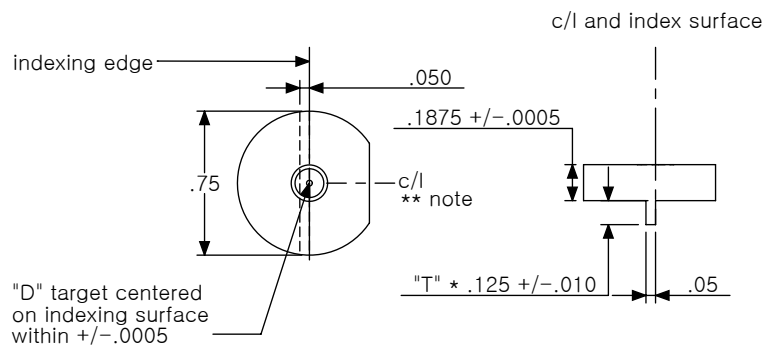
	FAMILY	"T" INDEXING TANG LENGTH	"D" DOT DIAMETER	MATERIAL			
TSG STANDARD BUILD	TSG	↓	↓	1144 steel, black oxide finish			
CUSTOMER PROVIDES INFO	TSG	■	■				
REFERENCE NOTES	_____						

TARGET, SKIN GAP

CAD on file

**NOTE**

The side of the target with the flat represents the side of the indexing surface.



**TSG FEATURES**  
1144 STEEL, BLACK OXIDE FINISH (standard)

**TSG ORDERING**  
STANDARD INDEXING TANG LENGTH

.125

Other indexing tang lengths possible, but subject to call-out quote.

### T1.5S

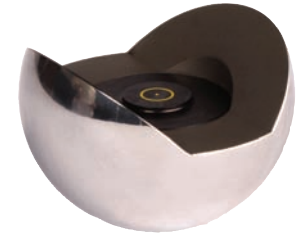
Provides same centerline value as a Spherically Mounted Retro-Reflector. This allows interchangeability from Laser Trackersystems to computer-aided Theodolite systems.

### T1.5S ORDERING INFORMATION

	FAMILY	"D" DOT DIAMETER	MATERIAL				
T1.5S STANDARD BUILD	T1.5S	↓	stainless steel(SS) and 1144 steel				
CUSTOMER PROVIDES INFO	T1.5S	■	■				
REFERENCE NOTES	_____						
	_____						

## THEODOLITE 1.5 SPHERE

CAD on file



**T1.5S FEATURES**  
 HARDENED STAINLESS STEEL SHELL/SPHERE  
 R/C 53 – 55 with 1144 STEEL,  
 BLACK OXIDE INSERT.

